

UNINCORPORATED MARTIN COUNTY

ACREAGE

SEC. 32, TWP. 37 S., RGE. 41 E.
SCALE: 1" = 40'

GOVT. LOT 2 GOVT. LOT 1

(APPROXIMATE)
GOVT. LOT LINE

(APPROXIMATE)
SECTION LINE

SEC. 29-37-41
SEC. 32-37-41

③ CURVE ③
 P.I. STA. 57+34.41
 (N) 1,049,273.962
 (E) 898,242.154
 $\Delta = 05^{\circ}38'16''$
 D = 01°18'35"
 T = 215.41'
 L = 430.47'
 R = 4,374.79'
 P.C. STA. 55+19.01
 (N) 1,049,106.792
 (E) 898,106.305
 P.T. STA. 59+49.48
 (N) 1,049,453.669
 (E) 898,360.923

R=4,344.79'
 $\Delta=05^{\circ}38'16''$ (LT.)
 L=427.52'
 CB=N 36°16'47" E

R=4,404.79'
 $\Delta=05^{\circ}38'16''$ (LT.)
 L=433.42'
 CB=N 36°16'47" E

BEGIN MAINT.
 R/W LINE, LT.
 +00.00
 30.00' LT.

FD. 5/8" IRC
 +08.59
 29.96' LT.

FD. N/TT IN
 15" PALM TREE
 +11.47
 100.53' LT.

FD. 90d NL
 +27.04
 72.45' LT.

FD. 90d
 SPIKE
 +50.05
 38.96' LT.

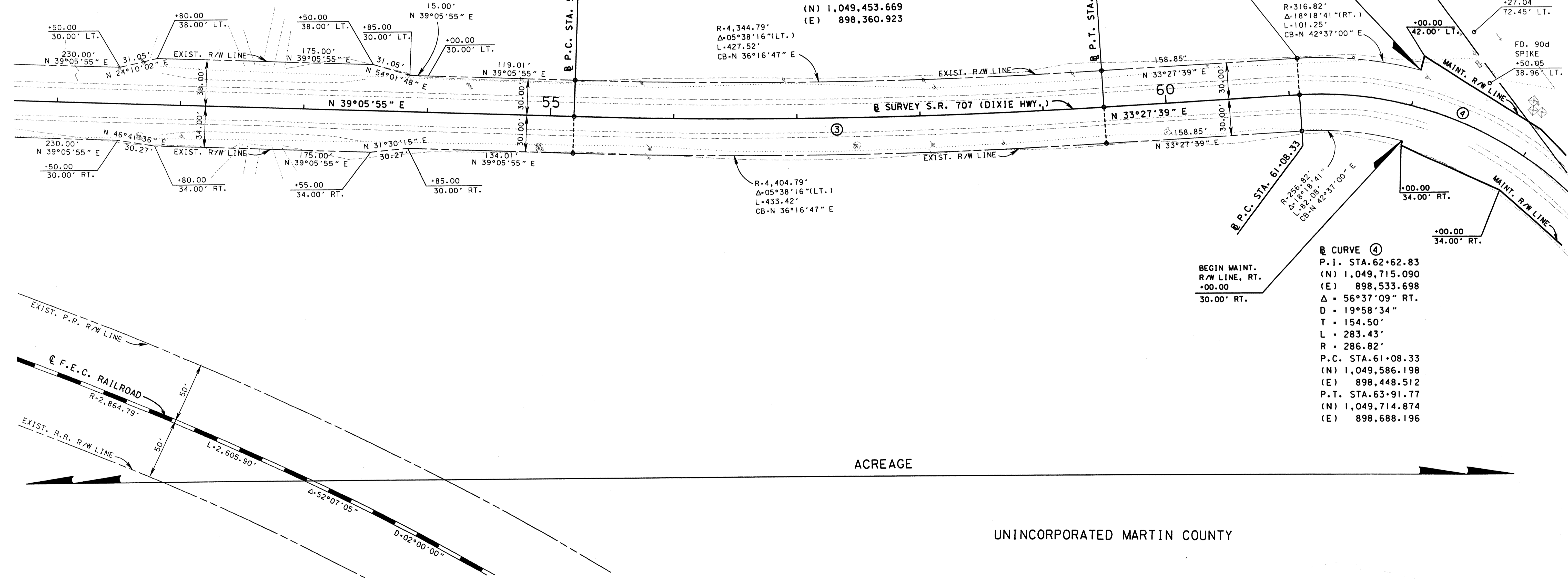
BEGIN MAINT.
 R/W LINE, RT.
 +00.00
 30.00' RT.

④ CURVE ④
 P.I. STA. 62+62.83
 (N) 1,049,715.090
 (E) 898,533.698
 $\Delta = 56^{\circ}37'09''$
 D = 19°58'34"
 T = 154.50'
 L = 283.43'
 R = 286.82'
 P.C. STA. 61+08.33
 (N) 1,049,586.198
 (E) 898,448.512
 P.T. STA. 63+91.77
 (N) 1,049,714.874
 (E) 898,688.196

P.C. STA. 61+08.33
 R=236.82'
 $\Delta=18^{\circ}18'41''$
 L=101.25'
 CB=N 42°37'00" E

P.T. STA. 59+49.48

P.C. STA. 55+19.01



ACREAGE

UNINCORPORATED MARTIN COUNTY

SEE SHEET 1 FOR GENERAL NOTES, CERTIFICATIONS, LEGEND, ETC.

Plot Book 15 Page 55

STATE ROAD 707 (DIXIE HWY.)
FROM WRIGHT BLVD. TO SAVANNAH ROAD

MAINTENANCE MAP

FLORIDA DEPARTMENT OF TRANSPORTATION
RIGHT OF WAY MAPPING

APPROVED BY
Jeffrey Smith
 DISTRICT RIGHT OF WAY SURVEYOR

REVISION	BY	DATE	REVISION	BY	DATE

BY	DATE
PRELIM L. CEFOLIA	5/17/02
FINAL L. CEFOLIA	10/10/02
CHECKED J. EDGAR	10/11/02

FED. PROJ. NO. N/A SECTION 89030-MAINT.(3)
 STATE ROAD 707 (DIXIE HWY.) MARTIN COUNTY

MAPS PREPARED BY LB# 696 KIMLEY-HORN AND ASSOCIATES	FIELD BOOK NO.'S SEE SHEET 1
W.P.I. No. N/A	SCALE: 1" = 40'
ITEM/SEGMENT NO. 4035911	SHEET 4 OF 6